

2001  Oldsmobile

INTRIGUE



4 HANDLING

8 CONTROL

Is it possible for a machine to inspire confidence?

Can a car move you to start a collection of favorite roads?

12 POWER

To chase destiny around every bend?

To drive in the moment?

CONTENTS

14 COCKPIT

IT CAN, IF IT IS INTRIGUE BY OLDSMOBILE—a car whose strength and finesse

perform in perfect harmony, whose style whispers grace and

18 FEATURES

power in a single breath, whose comfort soothes both body and mind.

It's surprisingly agile, with lively reflexes and performance.

22 STYLE

Isn't it time to start your own frequent-driver club?

26 SAFETY



Intrigue GL in Sterling. Shown with available equipment.



H A N D L I N G

WITH INTRIGUE'S DEFT BALANCE, CORNERS AREN'T OBSTACLES, THEY'RE ALLIES. Any road is enlivened when introduced to Intrigue's precision-tuned steering and suspension systems. Its patented magnetic speed-sensitive variable-assist power steering system, 4-wheel disc antilock brakes and remarkably rigid body structure make every corner an eager partner. Yet washboard bumps are mellowed by a state-of-the-art suspension that smoothes the road without limiting your ability to feel it. Indeed, Intrigue keeps its poise, even when driven on twisting roads.

4



STRUTS

Good road manners result from specially engineered gas-charged, twin-tube coil-over struts. They soften up rough spots without sacrificing crisp, controlled cornering.



"We found ourselves learning to drive on the Intrigue in the corners, as if it were a BMW or Mercedes."

Automobile Magazine

PRECISE STEERING RESPONSE

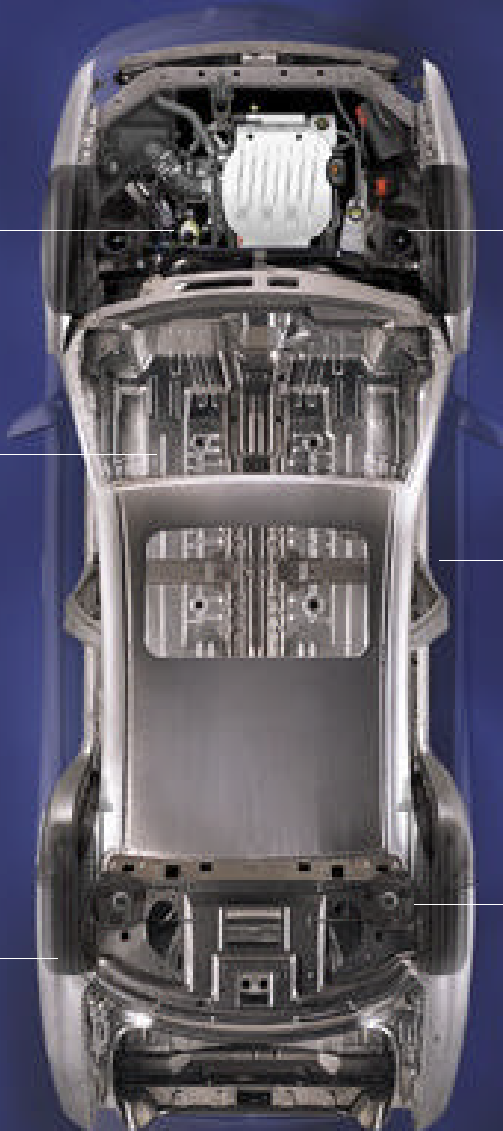
The magnetic speed-sensitive variable-assist power steering provides the precise amount of power assist. The system eases parking and low speed maneuvers but helps keep you connected to the road at higher speeds.

OUTSTANDING ON-CENTER FEEL

Rigidly mounted but well-damped to keep out road rumble and noise, the patented splined intermediate shaft enhances on-center steering feel to help you stay in control.

ROAD GRIP AND STABILITY

The standard tire specifications and the available H-rated tires enhance high speed directional stability as well as providing outstanding response. Sound-isolating wheelhouse liners help reduce road and tire noise.



GREAT RIDE AND BETTER HANDLING

With Intrigue's rigid strut towers and the twin-tube struts with variable strut valving, you no longer need to choose between ride and handling. You get both. You can feel the road but the road doesn't become intrusive.

A TIGHT BODY EQUALS A QUIET CABIN

A tight, rigid body lets the suspension do its work while reducing road noise and vibration into the cabin. A rigid body structure also reduces body flex and twist, so Intrigue keeps squeaks and rattles to an absolute minimum.

TAKES CURVES WITH CONFIDENCE

The tri-link rear suspension controls unwanted toe change under cornering loads and when driving over bumps. By maintaining precise wheel geometry, Intrigue helps you negotiate curves with greater confidence and handles bumps with increased directional stability.



QUICK REACTION

Lightweight alloy wheels with P225/60R16 radial touring tires react quickly to your input.





AutoWeek on Speedvision

CONTRAIL

8

Without PCS





CRASH AVOIDANCE

When making evasive maneuvers, avoiding a collision depends on controlling the car. While you steer around danger, the available Precision Control System's sophisticated sensors and computer controls help, when necessary, to maintain handling stability.



REMAIN POISED

Cornering balance can be upset by uneven pavement, potholes or slippery surfaces. Since available PCS is always on call — its sensors monitor multiple functions several times per second — it is always ready to help counteract unexpected instability.

Intrigue GLS in Ruby. Shown with available Precision Sport Package.

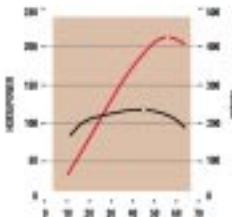


POWER

"Probably nowhere else can you buy so much engine
at such reasonable cost."

Ward's Auto World

IT'S NOT SO MUCH THE SEAT OF POWER AS IT IS THE PINNACLE. Intrigue's 3.5-liter Twin-Cam V6 was named one of the "Ten Best" engines in America 2 years in a row.* Surprised? You shouldn't be. Developed using the most extensive computer testing in our history, it uses a 4-valve head design pioneered in the Aurora V8 and lightweight aluminum construction for swift passing and refined balance. Press the accelerator, and you'll feel like you are atop a thoroughbred—its 215 horses driven through an automatic transmission that reacts instinctively to your commands. It's even on top of maintenance needs with long-life fluids, platinum-tipped plugs that last up to 100,000 miles and a steel timing chain that will likely never need replacement.**



AWARD-WINNING PERFORMANCE

Intrigue's 215-hp engine is among the most powerful in its class. Like a sprinter, the Twin-Cam, 24-valve V6 excites with explosive performance. But like all champions, it always has extra strength in reserve, thanks to a broad, flat torque curve peaking at 230 lb-ft.



4-VALVE HEADS

This advanced design uses twin intake valves to allow more air into the combustion chamber, so fuel burns more efficiently and completely. Two exhaust valves allow exhaust gases a faster exit, helping Intrigue's engine to keep delivering power at higher speeds.





Intrigue GL in Bronze Mist. Shown with available equipment.

“The Intrigue’s clean, orderly instrument panel is the centerpiece of an especially nice interior.”

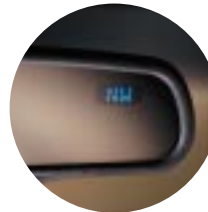
Automobile Magazine

COCKPIT

WILL YOU COME TO REST, OR RECHARGE? TO SAVE TIME, OR TO SAVOR IT? Intrigue never asks you to cast your allegiance one way or the other. It’s engineered to indulge divergent spirits in equally rewarding measure. The airy-feeling 5-passenger cabin provides you with panoramic visibility for safety, an air filtration system designed to help block out pollen and dust and supportive contoured seating to coddle you in comfort—whether you’re enjoying a brisk drive or savoring a leisurely journey home. The cockpit beckons with intuitively placed controls and easy-to-see instruments. It’s an interior designed to forge a clear connection between driver and road—how strong of a connection depends only on your mood.

ELECTROCHROMIC REARVIEW MIRROR

Standard on GLS models, the mirror automatically dims in low-light conditions to virtually eliminate distracting glare. It also features a built-in compass.



DUAL-ZONE COMFORT

Intrigue doesn't just focus on the driver's needs. Automatic climate control, standard on GL and GLS, provides dual-zone temperature settings for the individual comfort of the driver and front passenger.



Intrigue GLS with leather-trimmed seating in Neutral.



FEATURES

INTRIGUE CARESSES ITS OCCUPANTS—AND THE ROAD—WITH EQUAL FERVOR. In fact, Intrigue's inviting interior is specifically equipped to promote a comfortably acute interplay between you and the asphalt below. Available leather-trimmed and heated front seats embrace you in supportive, power-controlled comfort. To personalize your driving climate, four-season air conditioning with rear-seat air ducts creates a soothing atmosphere in which to explore the longer road home. When you finally do pull over, a standard retained power feature conveniently keeps accessories operating—assuming you can convince yourself to switch Intrigue's dash-mounted ignition to "off."



6-WAY POWER DRIVER'S SEAT

Finding an ideal sitting position won't require guesswork and fiddling with the controls. With the 6-way power driver's seat (available on GX, standard on GL and GLS), you can quickly dial in the perfect setting.



HEATED FRONT SEATS

Enjoy the Intrigue's warm embrace on cold mornings. The heated seats (available on GL and standard on GLS) will warm driver and front passenger by simply pressing the buttons.



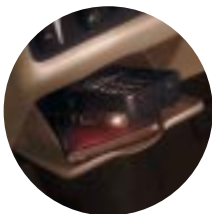
FOLDING REAR-SEAT ARMREST

To make life in the rear seat a little more gracious, Intrigue features a folding rear-seat armrest. Sit back and relax.



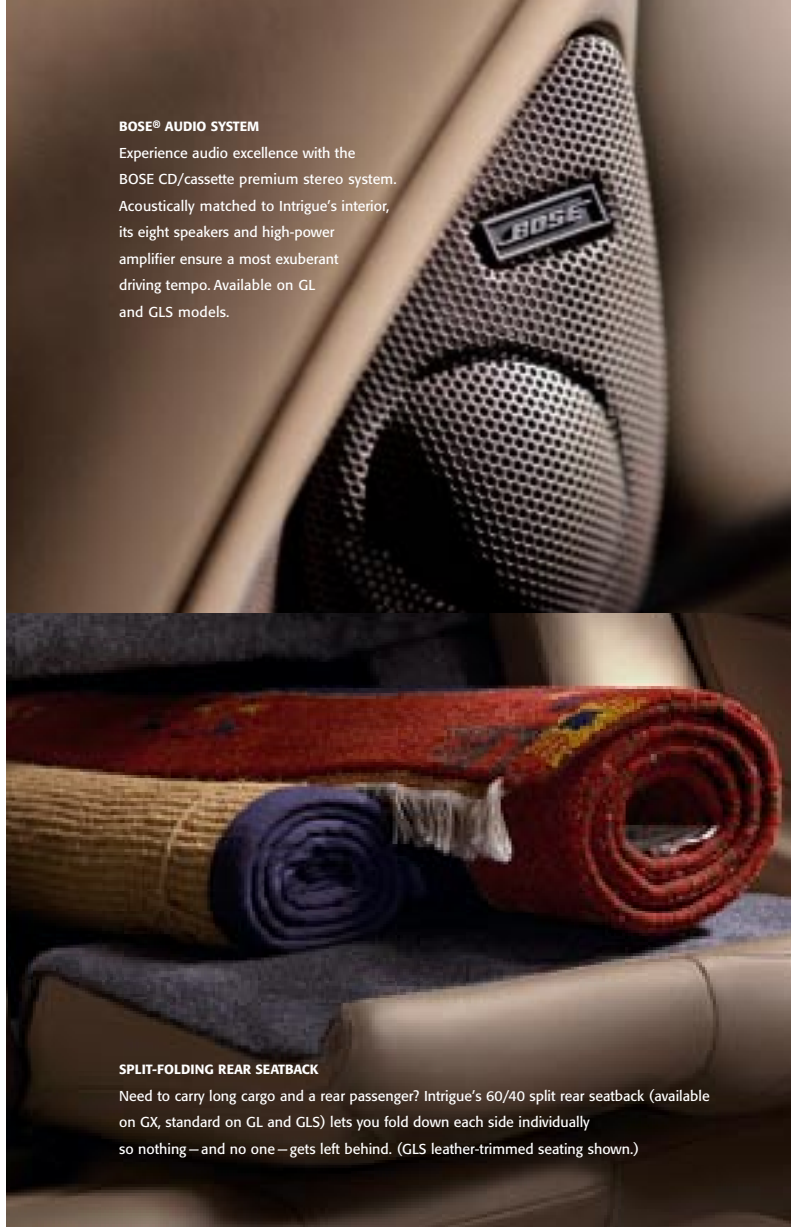
FINGERTIP CONTROL

The steering wheel-mounted cruise control feature is standard on all models. The steering wheel-mounted audio touch controls are standard on all GL and GLS models.



CONVENIENT STORAGE

Intrigue features lots of handy storage places. This unique driver's storage compartment to the left of the steering wheel offers easy access to frequently needed items.



BOSE® AUDIO SYSTEM

Experience audio excellence with the BOSE CD/cassette premium stereo system. Acoustically matched to Intrigue's interior, its eight speakers and high-power amplifier ensure a most exuberant driving tempo. Available on GL and GLS models.

SPLIT-FOLDING REAR SEATBACK

Need to carry long cargo and a rear passenger? Intrigue's 60/40 split rear seatback (available on GX, standard on GL and GLS) lets you fold down each side individually so nothing—and no one—gets left behind. (GLS leather-trimmed seating shown.)



1. AIR FILTRATION SYSTEM

For your comfort, the standard air filtration system is designed to block out dust and pollen particles down to 1 micron in size and to keep out most particles that can irritate allergies.

2. TINTED, SOLAR-CONTROL GLASS

Standard in all Intrigue models are tinted glass panels, plus a solar-control windshield and rear-window glass to help block out radiant heat. This also reduces the workload of the air conditioning system.

3. ERGONOMIC CONTROL LAYOUT

Major dials and controls are clearly visible and positioned to be easily reached and operated. Quick access lets you keep your focus on the road ahead to enhance your safety.

4. ILLUMINATED ENTRY SYSTEM

The standard illuminated entry system is activated by lifting the door handle or pressing the available remote keyless entry button. To add a gracious touch, the system dims slowly, not abruptly, when the last door is closed.

5. REAR-SEAT AIR DUCTS

Rear occupants will appreciate the rear-seat ducting that delivers cooled or heated air to keep them comfortable.

6. REAR-WINDOW GRID ANTENNA

The technologically advanced rear grid antenna eliminates the mast antenna which is prone to breakage. It also enhances Intrigue's clean exterior appearance.

7. TRUNK SPACE

Intrigue's spacious trunk has a generous 16.4 cu ft of room to hold plenty of luggage even for a long weekend away. Standard on GL and GLS is a convenient cargo net to help keep small items secured.

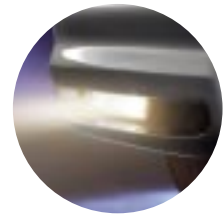


"Intrigue is certainly the style leader in the midsize sedan class."

Popular Mechanics

STYLE

ITS SHAPE IS AT ONCE RIVETING TO THE EYE AND INVISIBLE TO THE WIND. From the grille-less leading edge and contoured mirrors to the pinched waist and fluted body side, Intrigue eloquently announces its intention to be as purposeful as it is graceful. Dazzling like gems in a jeweler's light, the intricate headlamps glisten through the atmosphere, leading the sculpted shape confidently into the future. As you accelerate, the smooth, sleek skin stretched taut over a muscular frame leaves the wind grasping for something to hold.



FOGLAMPS

The front-mounted foglamps, standard in GL and GLS, enhance safety by giving you more visibility in foggy and hazy conditions.

GOLD EMBLEM PACKAGE

To emphasize Intrigue's presence, you can opt for the available gold badging to accent the body and wheels.





Intrigue GL in Black Onyx. Shown with available equipment.

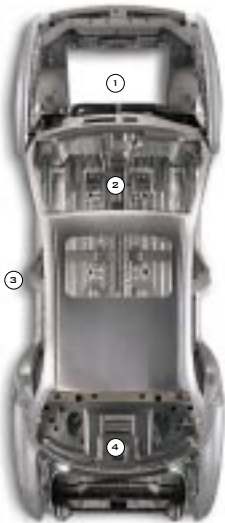


Intrigue GLS in Sterling. Shown with available Precision Sport Package.

SAFETY

IN ORDER TO PROVIDE INSPIRATION, YOU MUST FIRST OFFER PROTECTION. This understanding shaped Intrigue from the earliest design stages. Its strong-shouldered look reflects the sturdy structure underneath—the foundation for a comprehensive safety system with front and rear crush zones, side door beams, dual frontal air bags,* 4-wheel disc antilock brakes and available all-speed traction control. The available Precision Control System offers enhanced directional stability in unexpected hazard situations, while cornering lamps and daytime running lamps improve visibility for you and oncoming drivers. There's also battery-rundown protection, theft-detering PASSLock II, automatic power locks and available keyless entry.

26



CHASSIS SAFETY FEATURES

1. Front crush zone
2. Intrusion-resistant floorpan
3. Rigid roof pillars
4. Rear crush zone
5. Side-impact door beams
(not shown)



"The Intrigue turned out to be exceptional."
Car and Driver

*Always use safety belts and proper child restraints, even with air bags. Children are safer when properly secured in a rear seat. See the Owner's Manual for more safety information. See inside back cover for A Note on Child Safety.



ONSTAR

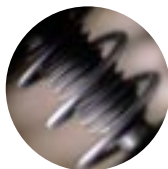
The OnStar® service, standard in GLS, is designed to enhance your security while on the road. In the U.S. and Canada, wherever a cellular connection can be made, OnStar can pinpoint your location and automatically alert an OnStar Advisor in case of an emergency. For instance, the OnStar system can sense the deployment of the air bag and alert the Advisor, who will contact help and provide them with your location.

*One-year OnStar safety and security contract is standard. Call 1-800-ONSTAR-7 for system limitations and details.



SUMMARY

4 HANDLING



Poise, balance and control. Intrigue's finely tuned chassis possesses an advanced degree of agility.

8 CONTROL



Maximize Intrigue's inherent stability with the available Precision Control System—technology designed to help you stay in control.

12 POWER



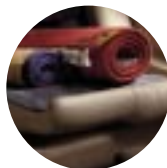
A 24-valve symphony in aluminum. The award-winning 3.5-liter Twin-Cam V6 gives a powerful performance.

14 COCKPIT



An intuitive driver-oriented cockpit inspires a stronger, longer connection to the car and to the road.

18 FEATURES



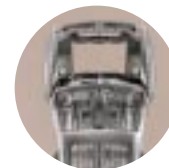
Intrigue doesn't trade practicality for performance. Its many thoughtful features are available to make the most of every mile.

22 STYLE



Alluring shapes and attention-grabbing style. Intrigue exhibits class-leading looks that exude a powerful elegance.

26 SAFETY



Solid construction and advanced engineering provide confidence-inspiring safety—and reassuring peace of mind.

STANDARD FEATURES FOR ALL INTRIGUE MODELS

POWERTRAIN/CHASSIS

3.5-liter Twin-Cam V6 engine with electronic 4-speed automatic transmission • Hydraulic engine mounting system • Reduced-maintenance powertrain features • Front-wheel drive • 4-wheel independent suspension • 4-wheel disc brakes • Magnetic speed-sensitive variable-assist rack-and-pinion steering • Stabilizer bars, front/rear • 16-inch aluminum-alloy wheels • P225/60R16 radial touring tires

SAFETY AND SECURITY

Safety-cage construction with side-impact protection • Dual frontal air bags • 3-point outboard safety belts with rear center lap belt • 4-wheel antilock brakes • Brake/transmission shift interlock • Daytime running lamps • Halogen headlamps with automatic control • Cornering lamps • Variable-intermittent wiper system • Side window and electric rear window defoggers • Automatic programmable power door locks • Rear-door child-security locks • PASSLock II vehicle security system • Front door warning reflectors • Maintenance-free battery with battery-rundown protection

INTERIOR

Contoured front bucket seats • Elevated “theater-style” rear bench seat with folding armrest • Full instrumentation • Center floor console • Dash-mounted ignition and hazard switches • 4-spoke steering wheel with adjustable steering column • Steering wheel-mounted cruise control with resume and acceleration features • Power trunk release • Air conditioning • Rear-seat air ducts • Storage: front center armrest, locking glove box, driver’s personal compartment, dual front and rear cupholders, and map pockets in doors and front seatbacks • Full cut-pile carpeting in cabin • Carpeted front and rear floor mats • Assist grips for all outboard passengers • Lighting system: courtesy, glove box, trunk and reading lamps, plus illuminated entry/exit • Covered vanity mirrors • Visors with sunshade extenders • Power windows with driver’s side auto-down • Auxiliary 12-volt power outlet • Retained accessory power • Air filtration system • AM/FM stereo with auto-reverse cassette player • 4-speaker extended-range sound system

EXTERIOR

“Liquid crystal” headlamps and taillamps • Tinted windows with solar-control windshield and rear window glass • Rear window grid radio antenna • Dual power fold-away outside mirrors (black on GX; body color on GL and GLS) • Gas-charged hood and non-intrusive trunk struts • Body-color side moldings

MODEL-SPECIFIC FEATURES S - Standard / A - Available

Option Package Discounts. You can realize substantial savings with any of our option packages:

GX Driver Control Package, GL Premium Leather Package and GLS Precision Sport Package

	GX	GX With Driver Control Package	GL	GL With Premium Leather Package	GLS	GLS With Precision Sport Package
Remote-control keyless entry system with panic button	—	S	S	S	S	S
Full-function traction control system	—	S	S	S	S	S
6-way power driver’s seat	—	S	S	S	S	S
AM/FM stereo with CD and cassette players, plus 6-speaker Dimensional Sound system	—	S	S	S	S	S
Leather-wrapped steering wheel, armrest and shifter knob	—	S	S	S	S	S
60/40 split-folding rear seatback	A	A	S	S	S	S
Foglamps	—	—	S	S	S	S
Steering wheel-mounted audio touch controls	—	—	S	S	S	S
Automatic dual-zone climate control system with outside temperature readout	—	—	S	S	S	S
Lighted visor vanity mirrors	—	—	S	S	S	S
Cargo net	—	—	S	S	S	S
6-way power passenger’s seat	—	—	—	S	S	S
Leather-trimmed seating areas	—	—	—	S	S	S
Heated front seats	—	—	—	S	S	S
Faux woodgrain interior accents	—	—	—	—	S	S
Electrochromic inside rearview mirror with compass	—	—	—	—	S	S
OnStar*	—	—	—	—	S	S
Power sunroof with sliding/tilting glass panel	A	A	A	A	—	S
Rear decklid spoiler	A	A	A	A	—	S
Precision Control System (PCS)	—	A	A	A	—	S
16-inch chrome-plated aluminum alloy wheels	—	—	A	A	—	S
Engine block heater	A	A	A	A	A	A
Gold Emblem Package	A	A	A	A	A	A
Bose Premium Audio System	—	—	A	A	A	A

*One-year OnStar safety and security contract is standard. Call 1-800-ONSTAR-7 for system limitations and details.

SPECIAL FEATURE HIGHLIGHTS

Available Precision Control System (PCS)

The Precision Control System consists of the PCS components, special 3.29:1 transaxle ratio, H-rated P225/60R16 performance tires and Magnasteer II variable-assist power steering system.

Delayed Door Locking

When the power door locks are activated, door locking is delayed for five seconds after the last door is closed. All doors will then lock automatically. This enables you to return into the vehicle without unlocking the door again.

Automatic Programmable Power Door Locks

Enables the driver to program the door locking system in one of four preferred modes when shifting into or out of "Park."

Lockout Prevention

The power door locks will not operate if the key is left in the ignition with the driver's door open.

Battery-Run-down Protection

Interior lamps left on after the ignition key is removed will shut off after 20 minutes to prevent battery drain.

Cruise Control

Automatically disengages when the traction control system activates or when the brakes are applied. To prevent accidental adjustment of the controls, the primary dash-mounted cruise control button must be "on" for the steering wheel-mounted controls to function.

Available Remote-Control Keyless Entry

Remotely unlock the driver's door or all four doors, and release the trunk. Can be programmed to confirm locking by horn chirp, headlamp flash, or both. Pressing the panic button will flash the headlamps and sound the horn.

PASSLock II Vehicle Security System

PASSLock II disables fuel delivery to the engine if the wrong ignition key is used or if ignition is tampered with.

Retained Accessory Power

Audio system, windows and available sunroof remain operational for up to 10 minutes after you turn off the engine and remove the ignition key or until a door is opened.

Ignition Interlock

Intrigue's 3.5-liter Twin-Cam V6 is so smooth that you may not realize it's running when idling. So it's equipped with a special ignition interlock to prevent a driver's attempt to start it if it's already running.

SPECIFICATIONS

POWERTRAIN

Engine displacement	3.5 liters (212 cu in)
Horsepower	215 @ 5600 rpm
Torque (lb-ft)	230 @ 4400 rpm
Fuel injection	Sequential port
Transmission	Electronic 4-speed overdrive automatic
Transaxle ratio	3.05 (3.29 with PCS)
EPA estimated fuel economy	19 city/28 highway

INTERIOR DIMENSIONS

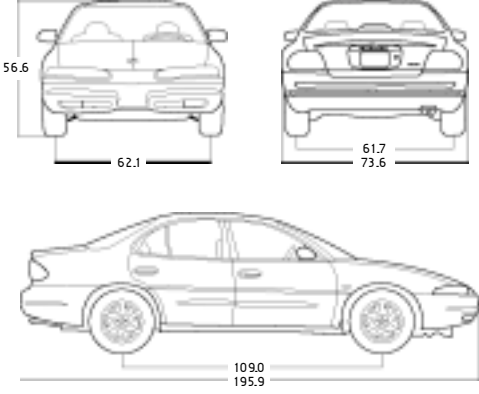
Headroom, front/rear (in)	39.3/37.4
Legroom, front/rear (in)	42.4/36.9
Shoulder room, front/rear (in)	58.0/57.0
Hiproom, front/rear (in)	55.6/54.8

CAPACITIES

Passengers	5
Trunk volume (cu ft)	16.4
Fuel (gal)	17.0

EXTERIOR DIMENSIONS

Wheelbase (in)	109.0
Length (in)	195.9
Width (in)	73.6
Height (in)	56.6
Curb weight (lb)	3434
Tread width, front/rear (in)	62.1/61.7
Turning circle (ft)	36.6



EXTERIOR COLORS/INTERIOR COLOR AVAILABILITY*



STERLING [12]
Dark Gray



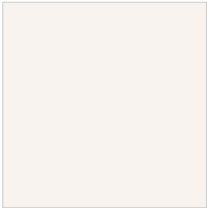
MIDNIGHT BLUE [28]
Neutral or Dark Gray



SANDSTONE [33]
Neutral



FOREST [34]
Neutral



IVORY WHITE [40]
Neutral or Dark Gray



BLACK ONYX [41]
Neutral or Dark Gray



RUBY [72]
Neutral or Dark Gray



BRONZE MIST [76]
Neutral or Dark Gray

INTERIOR COLORS**



NEUTRAL CLOTH
(GX, GL)



DARK GRAY CLOTH
(GX, GL)



NEUTRAL LEATHER
(GL, GLS)



DARK GRAY LEATHER
(GL, GLS)

*All exterior colors are metallic except Ivory White and Black Onyx. The paint color samples shown here may vary slightly from actual vehicle color due to the printing process.

**Cloth interior is standard on GX and GL. Leather interior is standard on GL with Premium Leather Package and all GLS models.



Shown left to right: Silhouette, Alero, Aurora, Intrigue and Bravada. Some vehicles shown with available equipment.

START SOMETHING NEW.

Oldsmobile offers a complete line of five vehicles which uniquely combine sophistication with agility. One look will tell you these vehicles are different: refined, but with a bit of an edge. One drive will tell you the rest of the story. Finely tuned steering and suspension systems, engines and interior designs all working in concert, delivering a feeling of complete control to you, the driver. From your first look to your first drive, you'll know what we mean when we say "start something."

To learn more, visit us online at

WWW.OLDSMOBILE.COM.

A WORD ABOUT OLDSMOBILE

The Occupant Protection, Crash Avoidance and Security/Theft Deterrence sections below contain a partial listing of Intrigue safety features. See your dealer for complete details.

Use Your GM Card

When you use The GM Card, you receive 5% Earnings* on your purchases toward the purchase or lease of an eligible new GM car or truck (excluding Saturn, Saab and EVI unless subject to a special promotion). These Earnings can save you hundreds, even thousands, toward a new GM car or truck. To apply for your GM Card, call 1-800-8GM-CARD 24 hours a day. Visit us online at www.gmcard.com. *See the applicable Earnings and use rules for your GM Card (either the GM Card Earnings Program Rules or The GM Card Redemption Allowance Program Rules) for terms, conditions, and limitations.

SMARTLEASE by GMAC

SMARTLEASE lets qualified customers pay for the expected depreciation of the vehicle over a period of time, plus a rent charge, taxes and fees, rather than paying for the entire vehicle as you would with traditional financing. This typically means with SMARTLEASE you'll be able to drive a new vehicle every few years or drive a better-equipped model. Ask your Oldsmobile dealer for more information or call 1-800-32-SMART.

For Occupant Protection

Adjustable front shoulder belt guides • Driver and front-passenger air bags • Automatic door locks • Rear outboard adjustable shoulder belt guides • Safety belt cinch capability for child seats • Rear door child-security locks • Power window lockout • Child restraint upper tether anchors • Safety belt energy management

A Note on Child Safety

Always use safety belts and proper child restraints, even with air bags. Children are safer when properly secured in a rear seat. Never place a rear-facing infant restraint in the front seat of any vehicle equipped with an active air bag. See your vehicle Owner's Manual and child safety seat instructions for more safety information.

For Crash Avoidance

4-wheel antilock brakes • Brake/transmission shift interlock • Front and rear disc brakes • Disc brakes audible wear indicator • Maintenance-free battery • Tires with built-in tread wear indicators • Automatic daytime running lamps • Cornering lamps • Door warning reflectors • Halogen headlamps • Outside power rearview mirrors • Rear window defogger • Front side-window defogger • Tinted glass windshield • Automatic exterior lamp control

For Security/Theft Deterrence

Anti-lockout feature • Battery-rundown protection • Laser-etched VIN plate • Marked body parts • PASSLock II vehicle security system • Remote deck and hood releases

A Word About This Catalog

We have tried to make this catalog comprehensive and factual. We reserve the right, however, to make changes at any time, without notice, in prices, colors, materials, equipment specifications, models and availability. Since information may have been updated since the time of printing, please check with your Oldsmobile dealer for complete details. Oldsmobile reserves the right to lengthen or shorten the model year for any product for any reason, or to start and end model years at different times.

The GM Mobility Program

Oldsmobile recognizes the importance of mobility to everyone's life and, therefore, offers financial assistance to persons with disabilities through the General Motors Mobility Program. This program can provide up to \$1,000 reimbursement toward the cost of eligible aftermarket adaptive equipment for drivers and passengers. For details and free resource information, call: 1-800-323-9935 (TTY users: 1-800-833-9935).

Assembly

Oldsmobiles and their components are assembled or produced by different operating units of General Motors, its subsidiaries or suppliers to GM worldwide. We sometimes find it necessary to produce Oldsmobiles with different or differently sourced components than originally scheduled. Since some options may be unavailable when your

vehicle is assembled, we suggest that you verify that your vehicle includes the equipment you ordered or, if there are changes, that they are acceptable to you.

Engines

Oldsmobiles are equipped with engines produced by different operating units of GM, its subsidiaries or suppliers to GM worldwide.

GM Protection Plan

The GM Protection Plan offers service protection in addition to that provided by GM's New Vehicle Limited Warranty. Ask your dealer about it. Coverage available only in the U.S. and Canada.

Updated Service Information

Oldsmobile dealers receive useful service bulletins about Oldsmobile products. You can order them by calling 1-800-551-4123.

Bumper-to-Bumper Limited Warranty

For three years or 36,000 miles (whichever comes first), every part of your new Intrigue is warranted for repairs to correct any vehicle defect related to materials or workmanship, including tires. With this limited warranty, there's no deductible, which means we'll pay for any repairs beyond normal maintenance. All body sheet metal components are warranted against rust-through from corrosion for six years or 100,000 miles, whichever comes first. There is also no deductible for rust-through repairs. Application of additional rust-inhibiting materials is not required or recommended. See your Oldsmobile dealer for the terms of this limited warranty.

Owner Aftercare

Throughout our three-year/36,000-mile (whichever comes first) Bumper-to-Bumper Limited Warranty, we also offer Courtesy Transportation, free trip routing and 24-hour Roadside Assistance by calling 1-800-442-OLDS. At Oldsmobile, we're committed to your satisfaction long after the purchase of your car.

Visit us at www.oldsmobile.com or call 1-800-255-6537 for information on any Oldsmobile product. For more information about Intrigue, visit our website at www.intriguecar.com or call 1-888-4Intrigue.

©2000 GM Corp. All Rights Reserved. Printed in the USA 7/00. Alero, Bravada, Intrigue, Silhouette, Delco, PASSLock, GMAC, The GM Card, Oldsmobile, the Oldsmobile emblem, the Oldsmobile nameplate, OnStar and SMARTLEASE are registered trademarks of General Motors Corp. "Start Something" is a trademark of General Motors Corp. "Aurora" is used with permission of Hankook Tire. Printed on recyclable paper. Ⓢ

Start Something ***INTRIGUE***

www.intriguecar.com 1-888-4INTRIGUE



O l d s m o b i l e