

1985 OLDSMOBILE ES

CUTLASS CIERA ES  FIRENZA ES



A MATTER OF GOOD TASTE.  ES

Oldsmobile ES... A matter of good taste

When it comes to choosing a car, "good taste" covers a wide spectrum of choices. ES is a choice for those discerning individuals whose taste leans more toward quiet good looks than chrome.

While these sedans have a definite European flavor, the ride, the added touch of comfort, the traditional class you've come to expect from Oldsmobile are also part of ES.



Firenza ES

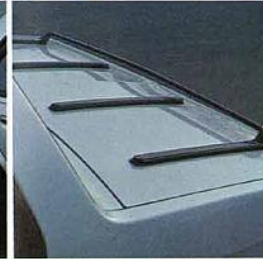
An elegant exercise of freedom.

Firenza's surprising capabilities are the unexpected complements of its conservative outward appearance. The electronic fuel injected 1.8 liter Overhead Cam L4 engine with manual 5-speed overdrive transmission (standard) provides power when it's needed to move quickly through traffic.

Response isn't Firenza's only asset. Rack-and-pinion steering and MacPherson strut suspension are the elements of its precise handling and smooth ride.

Firenza's good looks don't compete with your own; its subtle color combinations and black exterior accents create an understated backdrop for your personal style.

Firenza ES balances strength and grace with freedom; the sophisticated, practical achievements are yours with every drive.



Cutlass Ciera ES

Luxury with a sense of purpose.

Cutlass Ciera ES is a formidable alliance of well-directed elegance and performance. The electronic-fuel-injected response of the 2.5L L-4 engine is tempered by a smooth-shifting automatic transmission. Impeccable footwork from the independent MacPherson strut suspension. Front drive rack-and-pinion steering plus the firm ride and handling package give you that decisive Oldsmobile ES feeling.

Fully-reclining front bucketseats, leather-wrapped steering wheel, deck-lid luggage carrier and sport-styled wheel discs further confirm that no convenience has been overlooked.

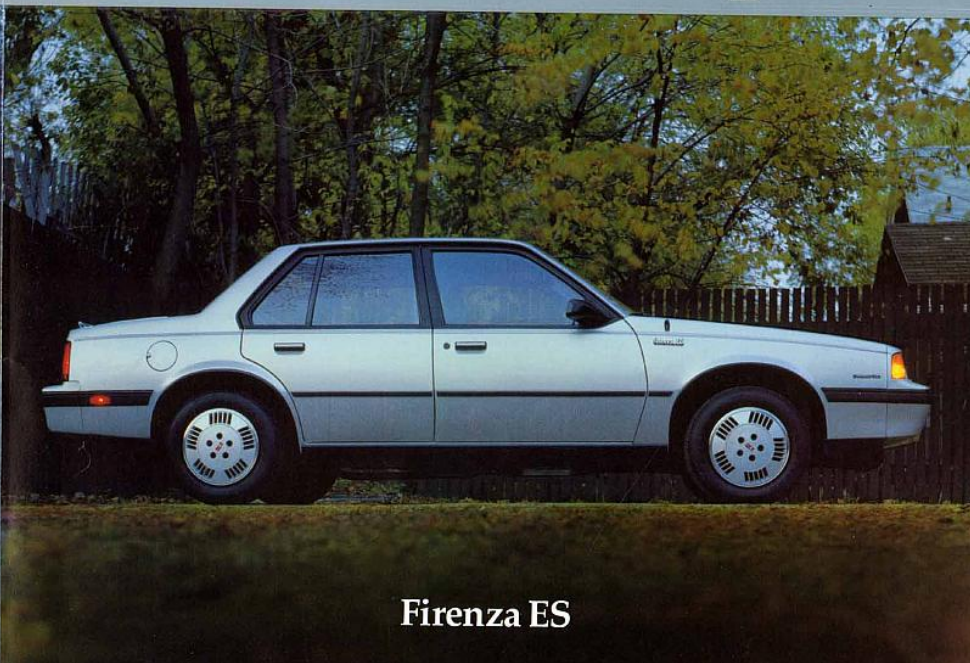
Luxury and function have joined forces in the 1985 Cutlass Ciera ES. In the pursuit of tasteful good looks and performance, the victory is nothing less than triumphant.



THE UNMISTAKABLE FEELING OF OLDSMOBILE  **ES**



Cutlass Ciera ES



Firenza ES



CIERA ES PACKAGE, Features Black Front and Rear Fascia Moldings, Grille Bars, Headlamp Housing, Belt Reveal Moldings, Drip Moldings, Lower Deck, Door Handles, Lock Cylinders, Body Side Moldings, Black Outside Mirrors, Mast Antenna and Luggage Carrier. Bright Rocker Panel Moldings. Specific ES Emblems are on Lock Pillar. Dual-Outlet Muffler with Twin Tailpipes with Optional Engine, (LN3) Console, with Floor Shifter, Firm Ride and Handling Package, Leather Wrapped Steering Wheel, Deluxe Styled Wheel Discs, Tungsten Halogen Headlamps. P195/75R14 Steel-Belted Radial Ply Blackwall All-Season Tires, Rallye Instrument Panel Cluster.

Cutlass Ciera ES

Description:

A mid-size classic sedan with room for 5 passengers. Luxury and utility's meeting ground is supreme driveability.

Engines:

Standard: 2.5 Liter I4 with Electronic Fuel Injection

Available: 3.0 Liter V6
3.8 Liter V6 with Multi-Port Fuel Injection
4.3 Liter V6 diesel

Transmission:

Standard: Automatic column mounted shift

Available: 4-speed automatic overdrive (with 3.8 liter V6 only)

Dimensions:

(coupe/sedan)
Overall length (in.): 190.3
Wheelbase (in.): 104.9
Luggage capacity (cu. ft.): 15.8

Colors:

Available in Silver Metallic, Light Teal Blue, Light Chestnut, Burgundy Metallic



FIRENZA ES PACKAGE, Features Black Front and Rear Wide Bumper Fascia Moldings, Belt Reveal Moldings, Drip Moldings, Window Frame Moldings, Wheel-Opening Moldings and Rocker Panel Moldings, Headlamp Bezels and Retaining Rings and Front End Panel Emblem Bezel. Also in Black are Door Handles and Body Color Inserts, Door and Deck Lid Lock Cylinders, Tail Lamp Lens Trim, Outside Mirrors and Mast Antenna. Amber Parking Lamp Lenses. "Firenza ES" Nameplate with Flag Bar on Front Fender, Moldings, Body Side—Black. Accent Stripe, Firm Ride and Handling Package. Leather Wrapped Steering Wheel, Deluxe Styled Wheel Discs, "Eagle GT" P205/60R14 Blackwall Tires, Tungsten Halogen High-Beam Headlamps, and Rallye Instrument Panel Cluster.

Firenza ES

Description:

This nimble compact combines quick response and handling with elegance in a most pleasing way.

Engines:

Standard: 1.8 Liter overhead cam L-4, with Electronic Fuel Injection

Available: 2.8 Liter V6 with Multi-Port Fuel Injection (with 4-speed manual)

Transmissions:

Standard: 5-speed, floor-shift manual with overdrive on 1.8 L

Available: Automatic, floor shift, on 1.8L and 2.8L
4-speed manual, floor shift on 2.8L

Dimensions:

Overall length (in.): 176.2
Wheelbase (in.): 101.2
Luggage Capacity (cu. ft.): 13.7

Colors:

Silver Metallic, Light Teal Blue Metallic, and Carmine Red

Some equipment shown is available at extra cost. See your dealer for complete details.

There is a special feel in an
Oldsmobile ES

Oldsmobile